

Synthesis of Day 1

Physical and Computational Aspects

1/4

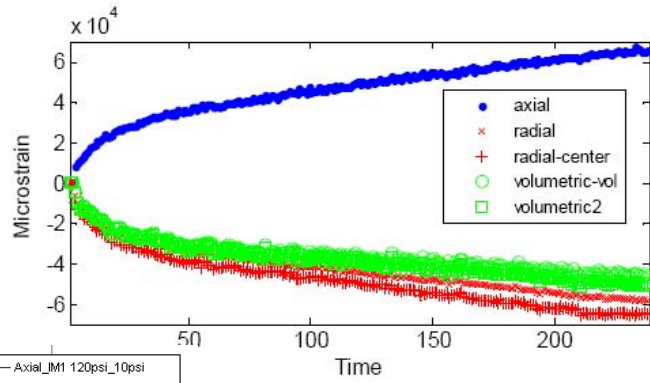
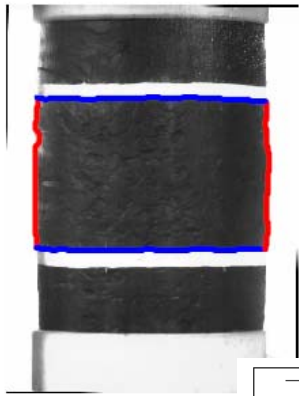
- Deliverable, Software - @ End of Agreement
 - What is the likelihood of a polished 3DFEM VEPCD product?
 - BUT heading in the direction where components can be definitely implement-able
 - Testing protocols for parameter determination
 - Products likely within reach of practitioners are 3DMOVE to go beyond MLET, but without secondary distress prediction; also engineered materials

2/4

- Modules for (far future?) implementation
 - “Rigorous-ness” still to be debated and developed, i.e. directionality
 - ETG’s criteria...how close to reality is sufficient?
 - However...when do you stop refining and get to running predictions (a la NCSU FEP++)...

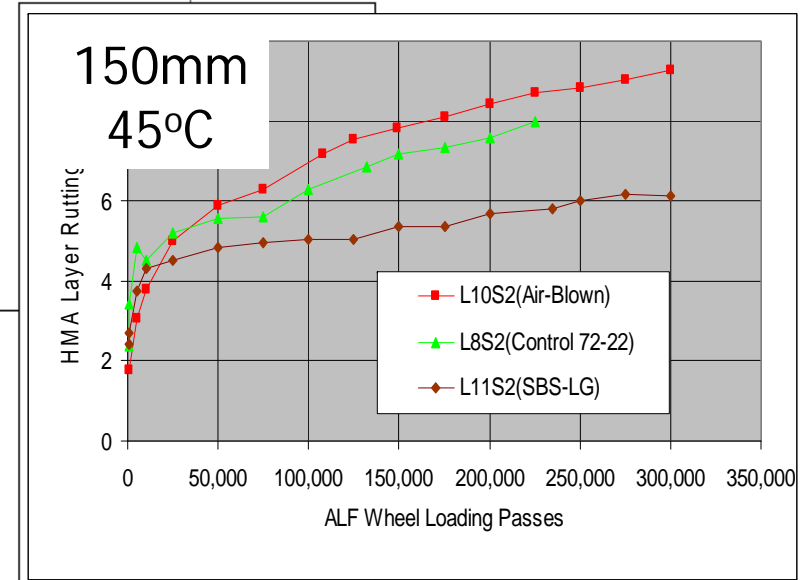
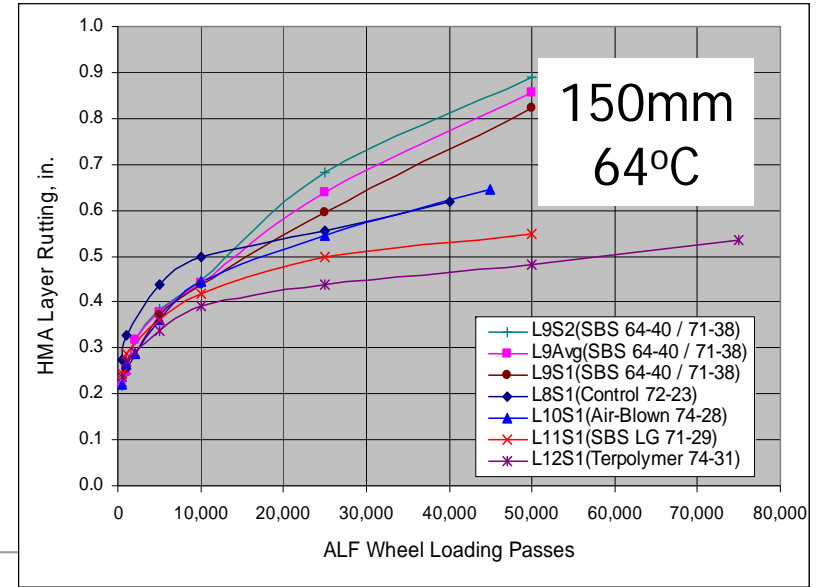
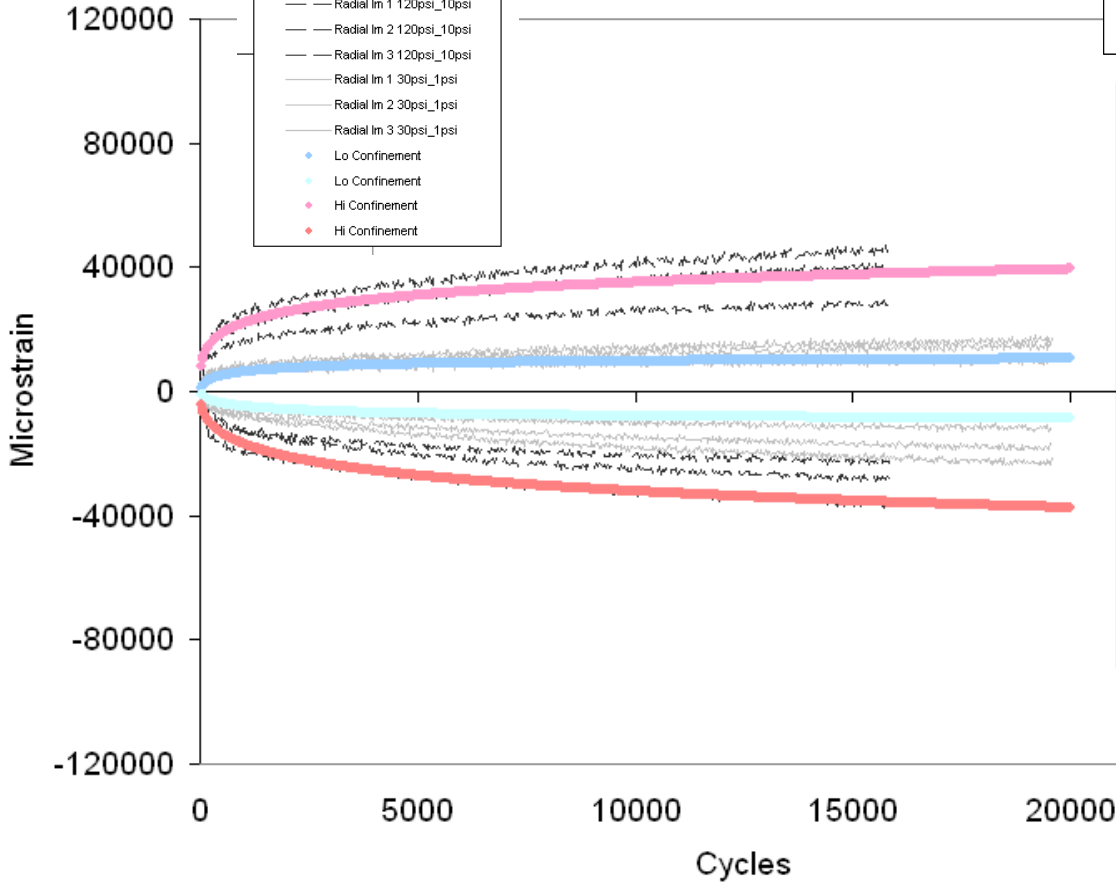
3/4

- In the meantime, to give feedback and facilitate wider understanding and acceptance (thinking of Design-Build)...set more tangible goals for model verification
 - Model comparisons of simple laboratory tests (e.g. IDT ITT) Yr 3
 - Model comparisons with ‘torture tests’ (Yr 4)
 - Bring in Full Scale and APT



SBS LG

- Axial_IM1 120psi_10psi
- Axial_IM2 120psi_10psi
- Axial_IM3 120psi_10psi
- Axial_IM1 30psi_1psi
- Axial_IM2 30psi_1psi
- Axial_IM3 30psi_1psi
- Radial_Im 1 120psi_10psi
- Radial_Im 2 120psi_10psi
- Radial_Im 3 120psi_10psi
- Radial_Im 1 30psi_1psi
- Radial_Im 2 30psi_1psi
- Radial_Im 3 30psi_1psi
- Lo Confinement
- Lo Confinement
- Hi Confinement
- Hi Confinement



4/4

- Identification of a hierarchy of users
- Computation and material models issues such as large cycles, need for parallel processing, etc. are currently unclear at this time
 - but when and how do bring this in when the rigorousness of the material models are still being working out